

Væk din fremtidssans

>> Med et kørekort til fremtiden <<

Og find din egen vej ind i fremtidens fundraising



UNIVERSAL
FUTURIST

Fremtidsforsker - Anne Skare Nielsen



Du er bestået

Du kan

Fremtidssans

Fremtidssans "MBS":

se
fremtiden



Mind

+ **mærke** **+**

fremtiden

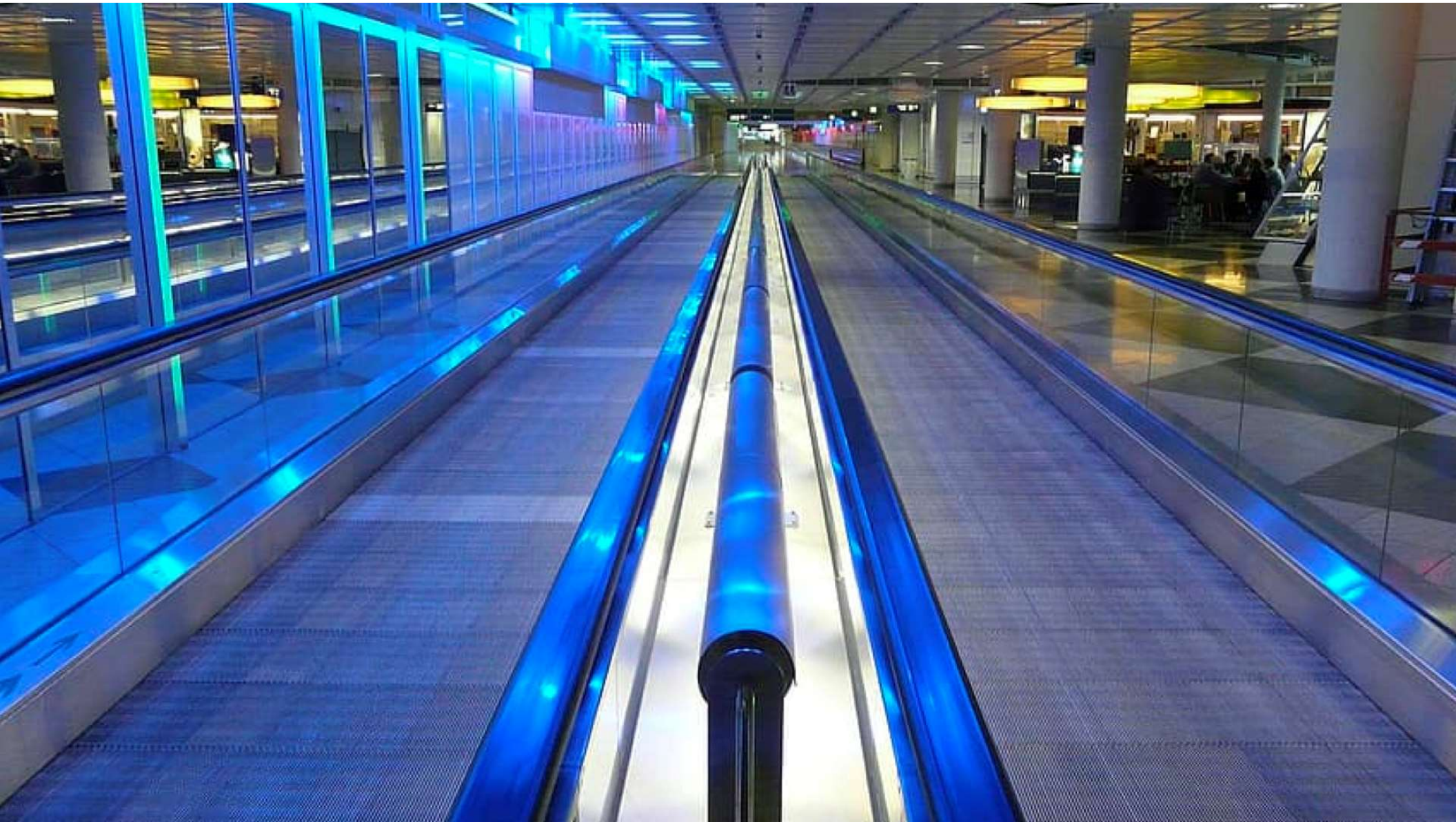


Body

tro
på fremtiden



Soul



Fremtidssans "MBS":

se

fremtiden



Mind

+

mærke

fremtiden



Body

+

tro

på fremtiden



Soul

Choluteca broen, Honduras



Efter Hurricane Mitch



Brug din fremtidssans

HVOR ER PENGENE?



Willy Sutton, bankrøver

De
**gamle
spilleregler**

De
**nye
spilleregler**

De
**gamle
spilleregler**

Gamechangen

De
**nye
spilleregler**

“Game changers” - Dem og det der ændrer spillets regler

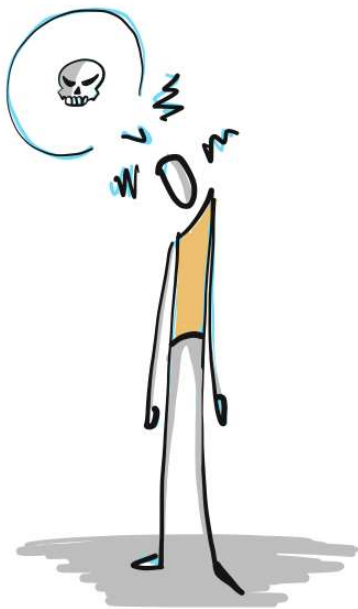


4



433

Troen din fremtidssans - Spillereglen



Irriteret
Jeg tager fejl
Sig "Interessant"



Indigneret / vred
Jeg har ret
Er det det værd?



Magisk
Tror du på det?
Go for it!



Tænk som en turist!

Nå?!

A'hva'ba?

Ej, hvor fedt!





Send smiles and
save lives this
holiday season!





Kommune indfører forbud mod facere: 'Det skræmmer shoppende væk'

CONCERN
worldwide

WILL YOU
HELP A
CHILD
GROW UP?

CONCERN
worldwide

CONCERN
HEALTH WA
Cred

TY
AKER

Brug din fremtidssans

HVEM REDDER VERDEN?

CEOS MUST LEAD

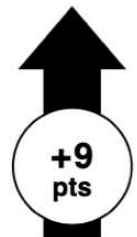
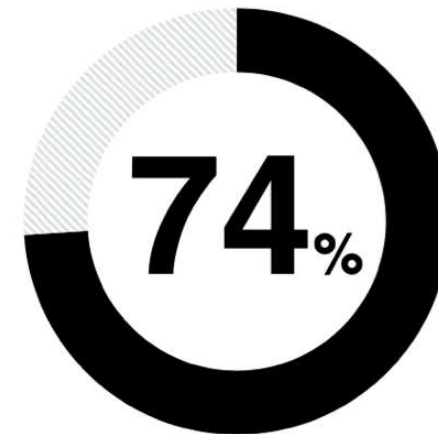
Percent who agree

It is important that **my employer's CEO speak out** on one or more of these issues



Training for jobs of the future	84
Automation's impact on jobs	81
Ethical use of tech	81
Income inequality	78
Diversity	77
Climate change	73
Immigration	62

CEOs should take the lead on change rather than waiting for government to impose it



Change, 2018 to 2020

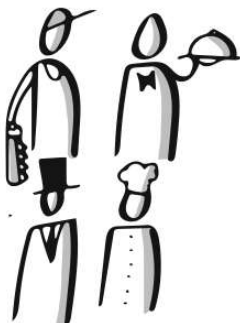
2020 Edelman Trust Barometer. CEO_ISS. How important is it to you that the CEO or head of the organization you work for speaks out publicly about each of the following issues? 9-point scale; top 4 box, important. Question asked of those who are an employee (Q43/1). Issues is a net of codes 1-7. General population, 28-mkt avg. CEO_AGR. Thinking about CEOs, how strongly do you agree or disagree with the following statement? 9-point scale; top 4 box, agree. Question asked of half of the sample. General population, 25-mkt avg.

Fundraising de seneste 4.600 år

RÅVARE
Almisser



RESSOURCE
Investering / mæcen



RELATION
Skabe et job



Resilience
Vedholdenhed og livsdesign



Revolution
Ændre verden sammen

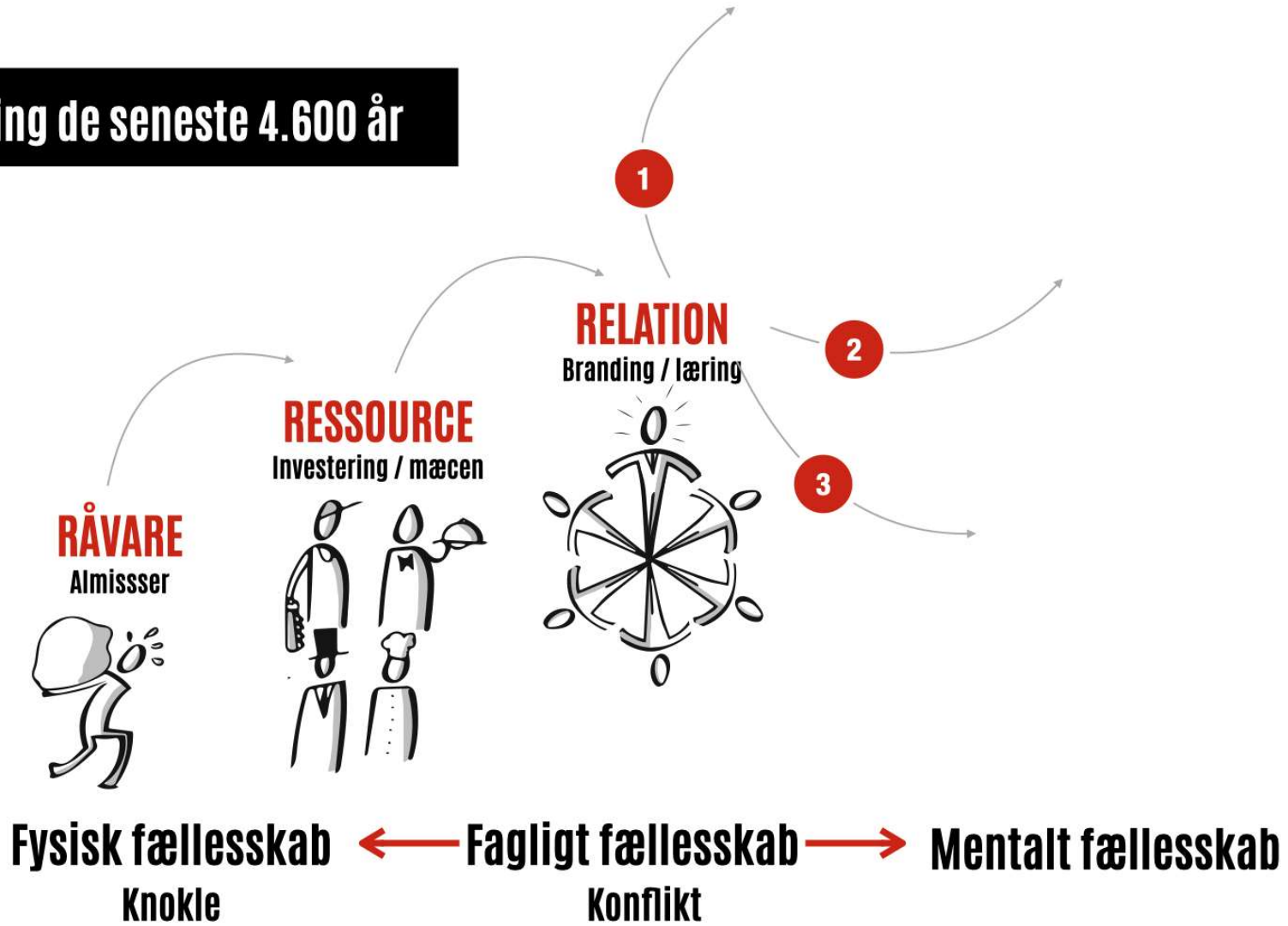


Potentiale
Fortæse mennesker

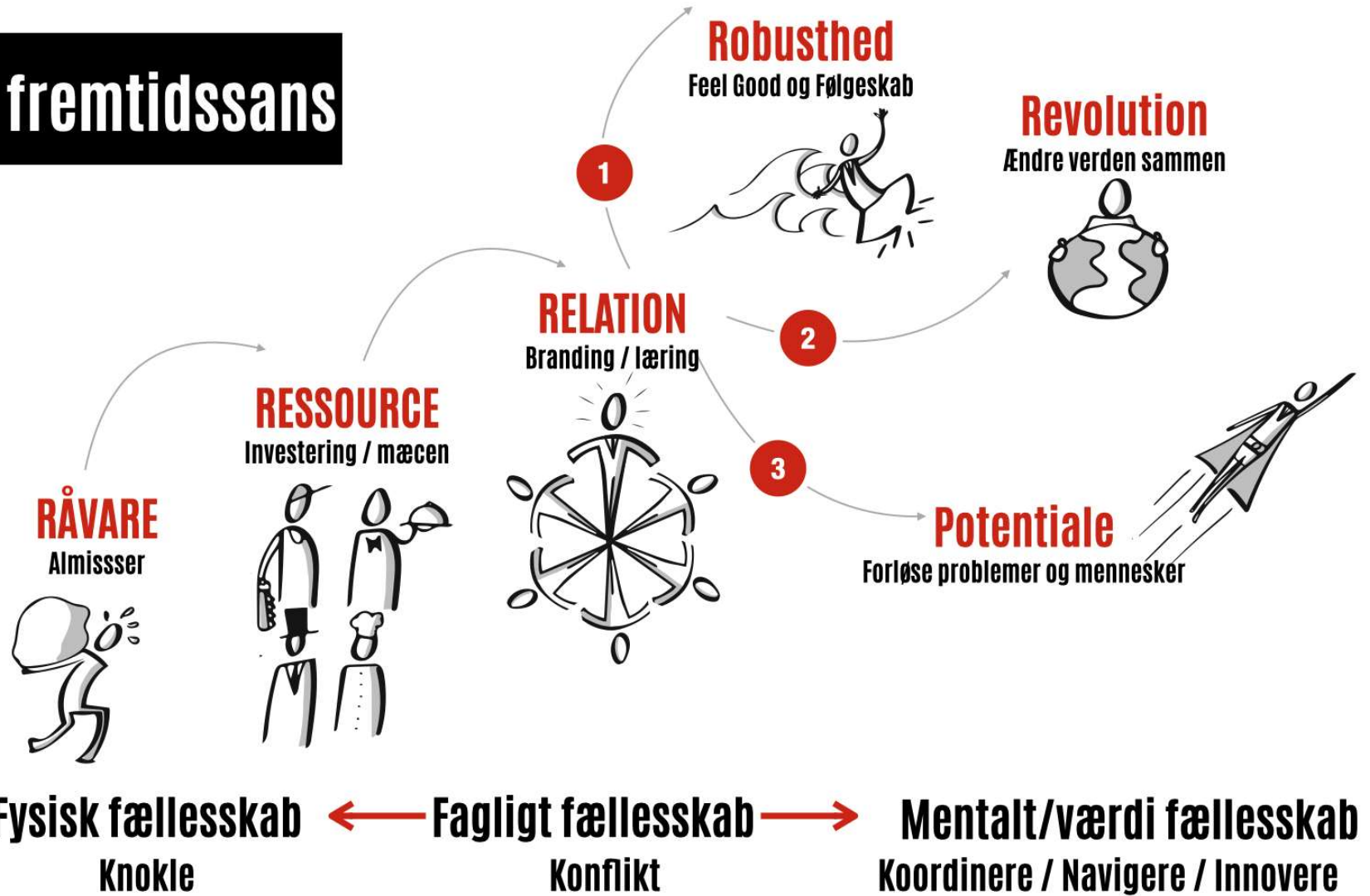


Fysisk fællesskab ← **Fagligt fællesskab** →

Fundraising de seneste 4.600 år



Brug din fremtidssans



Brug din fremtidssans

FUNDRAISING GAMECHANGERS

Energi som fredsprojekt og lokalsamfundsudvikling



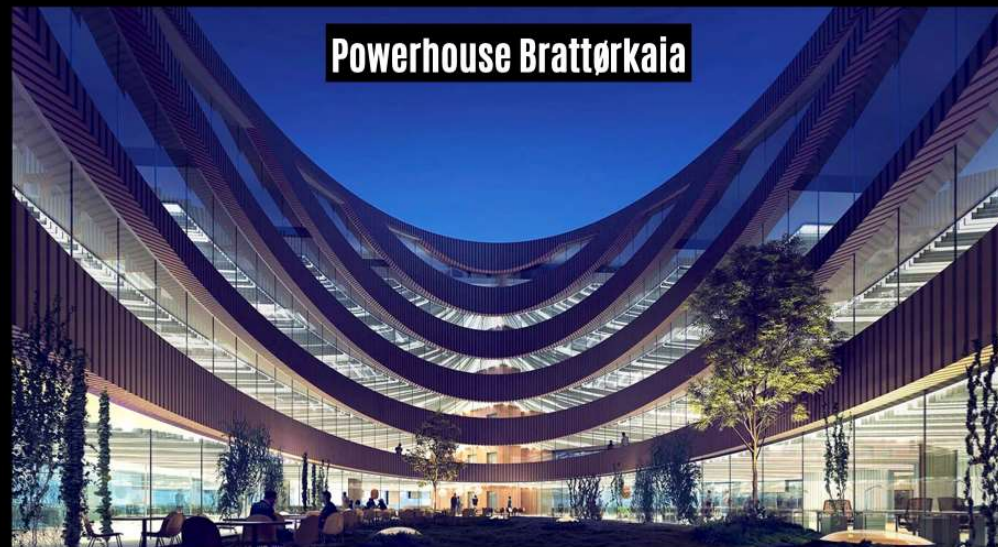
Markedsføringsbudget gone good



Liferun : Red liv og lær menneskerettighederne

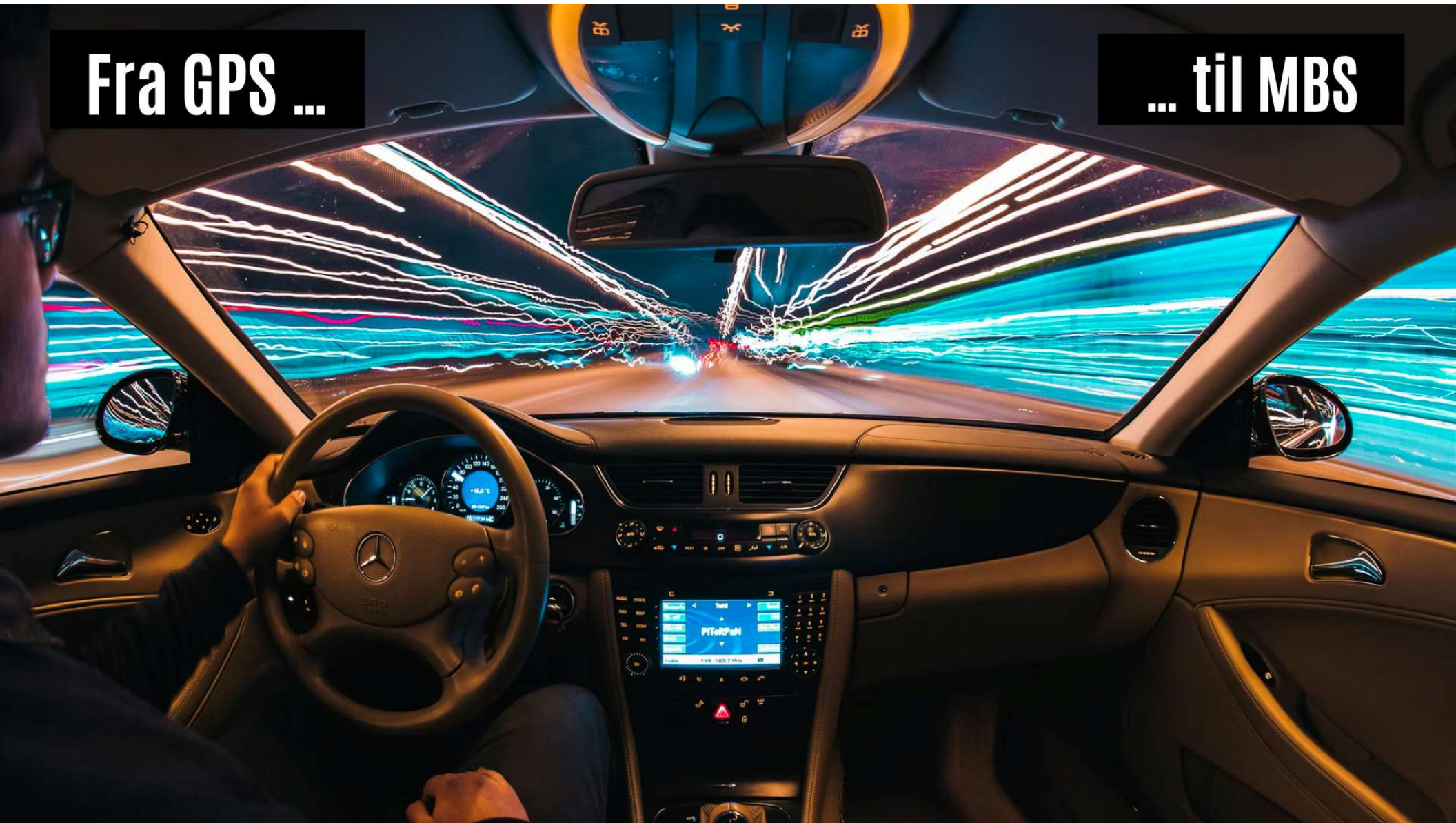


Powerhouse Brattørkaia



Fra GPS ...

... til MBS



A close-up photograph of a hand giving a thumbs up gesture. The hand is in sharp focus, with the thumb pointing upwards. The background is blurred, showing a person's face and a blue garment. A black rectangular box with white text is overlaid on the left side of the image.

Du er bestået

Spørg oraklet ;)

Let's connect

[linkedin.com/in/anneskarenielsen](https://www.linkedin.com/in/anneskarenielsen)

Anne Skare Nielsen - anne@universalfuturist.com - +45 6179 9002

